

Aveda Arts & Sciences Institute Minneapolis

MENU OF SERVICES

HAIRCUT & STYLE

Blowout	\$25	Special Occasion Style	\$30
+\$5 w/ Iron Work			
Haircut	\$25	Texture Sets & Braiding	\$30
+\$5 w/ Iron Work			

HAIR COLOR

Color Retouch	\$47 with Balance \$57
Bleach and Tone	Retouch \$74 First Time \$84
Partial Foil	\$65 with Retouch \$102
Full Head Foil	\$67 with Retouch \$114
Freehand Color	\$65
Corrective Color	*Price based on consultation
**A \$5 charge for color product will be added to all hair color services	

HAIR TEXTURE

Relaxer Retouch	\$50	Permanent Waves	\$50
First Time Relaxer	\$60		

HAIR HEALTH

Botanical Repair™ Treatment (Add-on)	\$5
This treatment is already included in your color service price.	
Shine Treatment (Add-on)	\$10
Scalp Treatment (Add-on)	\$5
Nutriplenish Pro Treatment (Add-on)	\$5
This treatment is only recommended for cut/style services.	

FACIAL TREATMENTS

Tulasāra Facial (30 min)	\$35	Dual Exfoliation Peel (60 min)	\$65
Tulasāra Facial (60 min)	\$45	Dual Exfoliation Peel (90 min)	\$75
Tulasāra Facial (90 min)	\$55	Perfecting Plant Peel (Add-on)	\$20

BODY TREATMENTS

Aveda Back Treatment (60 min)	\$45	Eye Treatment (Add-on)	\$10
Aveda Aroma Body	\$60		
Polish Treatment (75 min)			

ADVANCED ESTHETIC SERVICES

Microneedling	\$160
Microderm	\$50 \$25 (Add-on)
Dermaplane	\$50 \$25 (Add-on)
Chemical Peel	\$50
HydroDermabrasion	\$70 \$40 (Add-on)
Plantinum Hydroderm Treatment	\$90
Cryo (Add-On)	\$20
LED Light Therapy (Add-on)	\$20
Electrical Energy (Add-on)	\$15
Lymphatic Drainage (Add-on)	\$15
Mask (Add-on)	\$20

MAKEUP

Lash/Brow Tint	\$15 Both \$25
Makeup Application	\$25

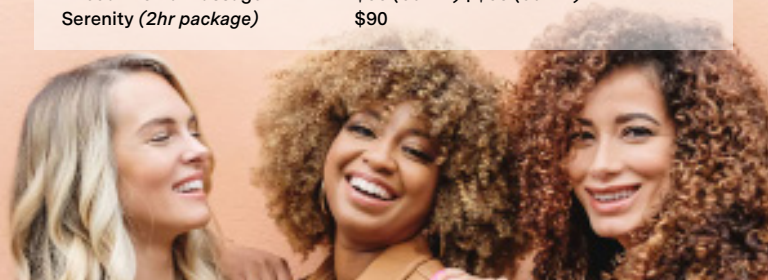
WAX HAIR REMOVAL

Facial Waxing	\$15	Back or Chest	\$40
(Brow, Chin, Cheek, or Lip)		Half Leg	\$30
Underarm	\$25	Full Leg	\$50
Half Arm	\$25	Bikini	\$35
Full Arm	\$35		

MASSAGE TREATMENTS

After consultation, we will provide you with the best combination products, personalized Aveda aromas & massage techniques: Swedish/relaxation, deep tissue, foot reflexology, acupressure, subtle energy work, or pre-natal massage.

Aveda Aroma Massage	\$55 (60min) \$65 (80min)
Serenity (2hr package)	\$90





Aveda Arts & Sciences Institutes

- ■ **Aveda Arts & Sciences Institute Arlington | 571 366 4809**
671 N. Glebe Rd, Suite 1280 | Arlington, VA 22203
- **Aveda Arts & Sciences Institute Atlanta | 404 649 7119**
1745 Peachtree St NE, Suite A | Atlanta, GA 30309
- ■ **Aveda Arts & Sciences Institute Austin | 512 320 8080**
6001 Middle Fiskville Rd, Suite 200 | Austin, TX 78752
- ■ **Aveda Arts & Sciences Institute Birmingham | 205 769 3500**
3200 Galleria Circle | Birmingham, AL 35244
- **Aveda Arts & Sciences Institute Baton Rouge | 225 295 1435**
2881 Westfork Dr | Baton Rouge, LA 70816
- ■ **Aveda Arts & Sciences Institute Corpus Christi | 361 992 5000**
1110 Ayers St | Corpus Christi, TX 78404
- ■ **Aveda Arts & Sciences Institute Charlotte | 704 333 9940**
1520 South Blvd, Suite 150 | Charlotte, NC 28203
- **Aveda Arts & Sciences Institute Covington | 985 892 3826**
1355 Polders Ln | Covington, LA 70433
- ■ **Aveda Arts & Sciences Institute Dallas | 214 363 1291**
8188 Park Lane, Suite C-150 | Dallas, TX 75231
- **Aveda Arts & Sciences Institute Hammond | 985 520 4124**
102 E Thomas St | Hammond, LA 70401
- ■ **Aveda Arts & Sciences Institute Houston | 936 271 7700**
19241 David Memorial Dr, Suite 100 | Shenandoah, TX 77385
- ■ **Aveda Arts & Sciences Institute Lafayette | 337 233 0511**
2922 Johnston St | Lafayette, LA 70503

● ■ ▲ **Aveda Arts & Sciences Institute Minneapolis | 612 331 1400**
400 Central Ave SE | Minneapolis, MN 55414

- ■ **Aveda Arts & Sciences Institute Nashville | 615 567 5417**
1765 Galleria Boulevard | Franklin, TN 37067
- ■ **Aveda Arts & Sciences Institute New Orleans | 504 454 1400**
3330 Veterans Memorial Blvd, Suite A | Metairie, LA 70002
- ■ **Aveda Arts & Sciences Institute New York | 212 807 1492**
233 Spring St | New York, NY 10013
- ■ **Aveda Arts & Sciences Institute San Antonio | 210 222 0023**
21003 Encino Commons, Suite 121 | San Antonio, TX 78259
- ■ **Aveda Arts & Sciences Institute Seattle | 206 302 1044**
802 E Pike St | Seattle, WA 98122

● **Cosmetology** ■ **Esthiology** ▲ **Massage Therapy**

Follow: @AvedaArts | Visit: AvedaArts.edu

Please be kind. Our students are still learning and growing as individuals and beauty artists.

**Pricing is based on individual client needs, length, condition of hair, multiple colors used, etc. Final pricing will be quoted during the service consultation. Services include finish. Not all services available at all Institute locations.*

*All services are performed by supervised students. Children under the age of 12 must be accompanied by an adult who is not receiving a service. **This charge is not subject to any offers or discounts.*

SPA DISCLAIMER: Please plan to arrive 15 minutes prior to your scheduled appointment. Arriving late may interfere with your treatment time and may decrease the therapeutic effects for you. All reservations will end at their scheduled time so as not to delay the next guest. We understand that certain circumstances are unavoidable and may require cancellation. Out of respect for our students & staff's time, we request a 24-hour notice for any cancellation or reservation change.

PASSION INTO PURPOSE

**Are you or someone you know
interested in beauty school?**

Ask to speak with our Admissions
Manager or **call 877 892 8332**

**Financial Aid Available
to those who qualify**

